

TOWN OF PALM BEACH UNITED WAY

14TH ANNUAL

# SCHOOL SUPPLY DRIVE



MONDAY, JULY 13 to MONDAY, AUGUST 3



The Town of Palm Beach United Way School Supply Drive collects school supplies and donations to benefit low-income families in Palm Beach County. Supplies and funds are donated to nonprofit partner agencies to distribute to students in need. We accept supplies for all grade levels.

## DROP OFF LOCATIONS

### United Way Office

44 Coconut Row, Suite M201  
(valet available)

### South Fire Station

2185 South Ocean Boulevard

### Central Fire Station

355 South County Road

### North Fire Station

300 North County Road

## TO BENEFIT

Adopt-A-Family

Literacy Coalition

Opportunity Early Childhood

## PARTNERS

Palm Beach Daily News

Palm Beach Fire Rescue

## CASH DONATIONS

Call 561-655-1919

### Write a check to

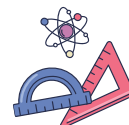
Town of Palm Beach United Way  
with "school supply drive"  
in the memo and mail to:  
44 Coconut Row, Suite M201  
Palm Beach, FL 33480

Visit [www.palmbeachunitedway.org](http://www.palmbeachunitedway.org)

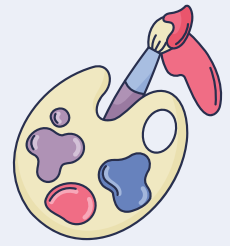
Scan the QR code:



THANK YOU FOR HELPING STUDENTS SUCCEED!



# ATTENTION ALL ARTISTS!



5TH ANNUAL

## TOWN OF PALM BEACH UNITED WAY SCHOOL SUPPLY DRIVE LOGO CONTEST

For the fifth consecutive year, the  
**Town of Palm Beach United Way School Supply Drive** will feature a logo contest.

Students can submit a drawing depicting the Town of Palm Beach United Way's annual School Supply Drive and it could be selected to serve as next year's logo. The design will appear on next year's School Supply Drive webpage, flyers, print advertising and social media.

**The winning student will also receive a \$200 Amazon Gift Card.**

To participate, students 18 years and under must submit their original drawing with a brief description of what they created and why.

Please also provide your age, what school you attend, and your contact information (phone, email and address).

All submissions will be judged in terms of artistic merit, creativity, and how well the theme is communicated through the artwork.

Drawings and descriptions should be delivered or mailed to the Town of Palm Beach United Way by **Monday, August 10, 2026**.  
Address: 44 Coconut Row, Suite M201 | Palm Beach, FL 33480



Last year's winning design,  
which is serving as  
this year's logo,  
was created by  
**Finley Dailey**

